

# Chapter 12 Hardware Setup

## 12.1 Open hardware setup

Make sure that LED sign is online, whatever through network or serial port then click “Options” and select “Hardware Setup” button, as shown in image 12-1. The password is “888”.

The screenshot shows a window titled "Hardware setup" with a close button (X) in the top right corner. The window contains several sections for configuring the LED sign:

- SCREEN ID:** M20-410-00410 (displayed in green text). A "Refresh" button is to the right.
- IP parameter:** A section with radio button selection. It includes fields for IP address (192.168.9.123), Subnet mask (255.255.255.0), and Default (192.168.0.1), each with a "Send" button.
- Serial port parameter:** A section with radio button selection. It includes fields for Serial (COM\_RS232) and Baudrate (9600), each with a "Send" button.
- Open internet mapping port:** A checked checkbox with a field for port number (31299) and a range indicator (1~65535), with a "Send" button.
- Link Server:** A checked checkbox. It includes two radio button options: "Server Domain" (with an empty field and "Domain backup" field) and "Server IP" (with an empty field and "Custom Name" field set to M20-410-00410). Each has a "Send" button.
- ID config(485 serial or RF):** A checked checkbox with a field for ID number (10) and a range indicator (1~239), with a "Send" button.
- Other process:** A checked checkbox. It includes a "Close" button and a section with a radio button option: "If you forget this sign ip ,you can Restore ip of sign to new ip by this process". Below this is a "New IP address:" field and a "Send" button.
- Upgrade software in led card:** A checked checkbox with a progress bar showing 0% and an "Upgrade" button.

Figure 12-1

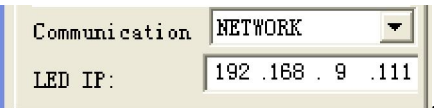
# 12.2 Hardware parameters

Hardware parameters configuration include IP address, serial port configuration and other process.

## 12.2.1 Setup IP

When connecting LED sign with computer through RJ45 cable then the network IP will be

the LED sign IP, please see this picture



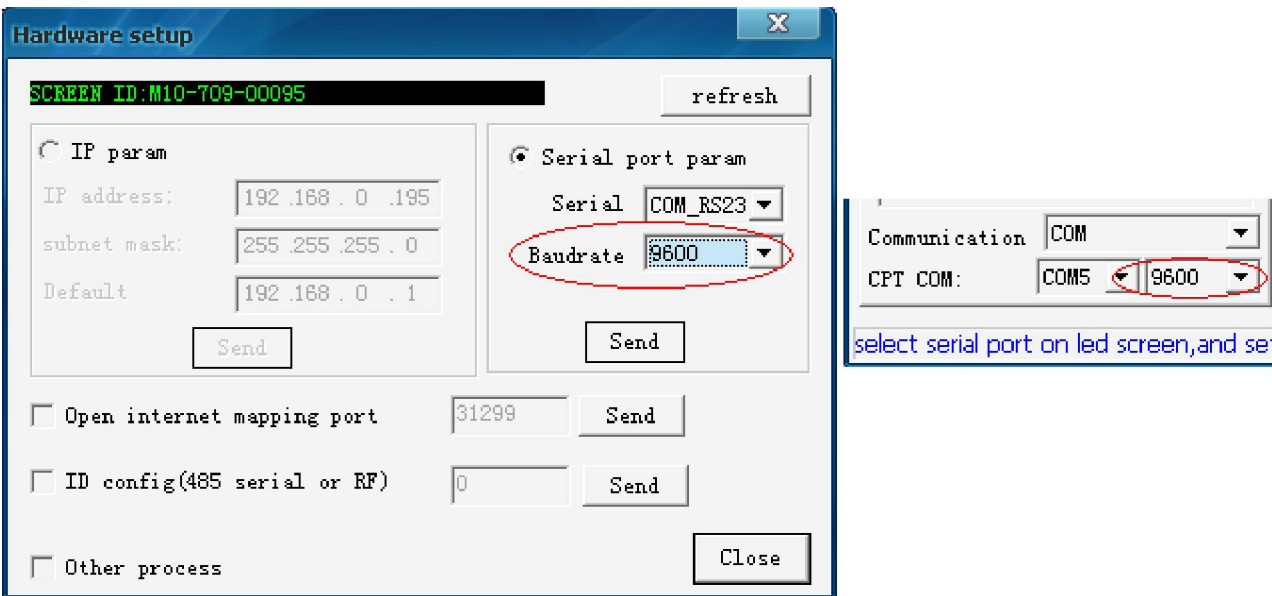
Communication	NETWORK
LED IP:	192.168.9.111

When LED sign and computer in the same LAN then make sure that IP of the two should be in the same network segment. For example, if computer IP is 192.168.0.xxx then LED sign IP will be 192.168.0.xxx, the two both in "0"segment.

If LED sign and computer in different LANs then you need to setup subnet mask and gateway correctly.

## 12.2.2 Serial port parameters

When using COM port communication type, please make sure that Baud rate of LED sign is just the same with that of PC. Its default value is 57600bps. As shown in image 12-2.



**Hardware setup**

SCREEN ID: M10-709-00095 refresh

☐ IP param

IP address: 192.168.0.195

subnet mask: 255.255.255.0

Default: 192.168.0.1

Send

☒ Serial port param

Serial: COM\_RS23

Baudrate: 9600

Send

☐ Open internet mapping port 31299 Send

☐ ID config(485 serial or RF) 0 Send

☐ Other process Close

Communication: COM

CPT COM: COM5 9600

select serial port on led screen, and se

Figure 12-2

### 12.3 IP Recovery

When connecting LED sign with computer through network cable successfully, but the software could not check LED sign IP, moreover, users have forgotten LED sign IP, under this condition, you can select IP Recovery.

When you operate this option, please make sure that IP for LED sign and computer in the same network segment or please connect the two things through cable directly.

Input IP address that you want, click“Send” button. No tip message will appear. Please check that whether LED sign restarted or not or check the LED screen again after several seconds.

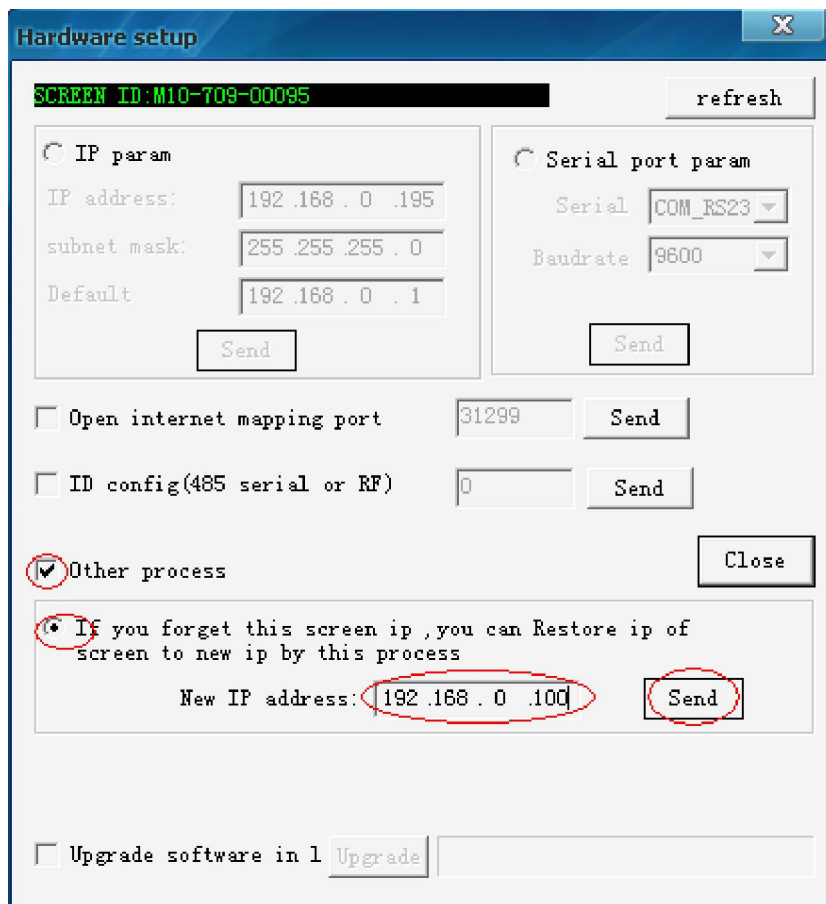
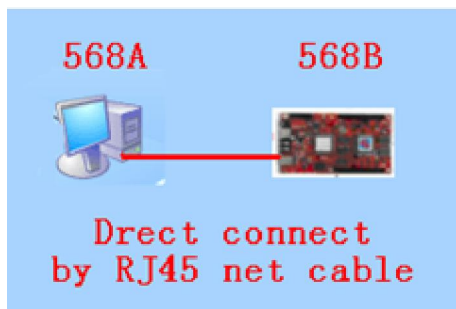


Figure 12-3

### 12.2.6 Software upgrading

Tick the box in the front of “Upgrade software in led card”, and then click on “Upgrade” button. At last, Tip message of Upgrading successfully will appear. As shown in image 12-4.



Figure 12-4